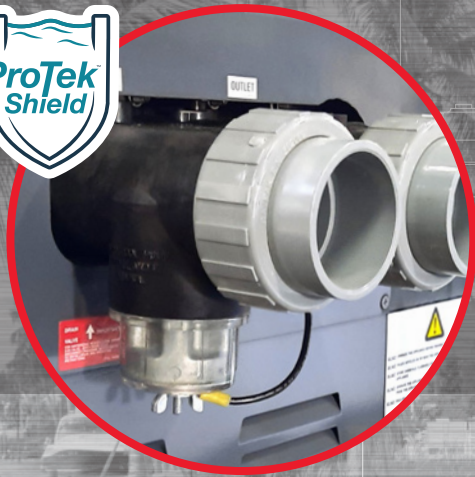


Perfect pool & spa temperature
365 days a year



RHEEM THERMAL

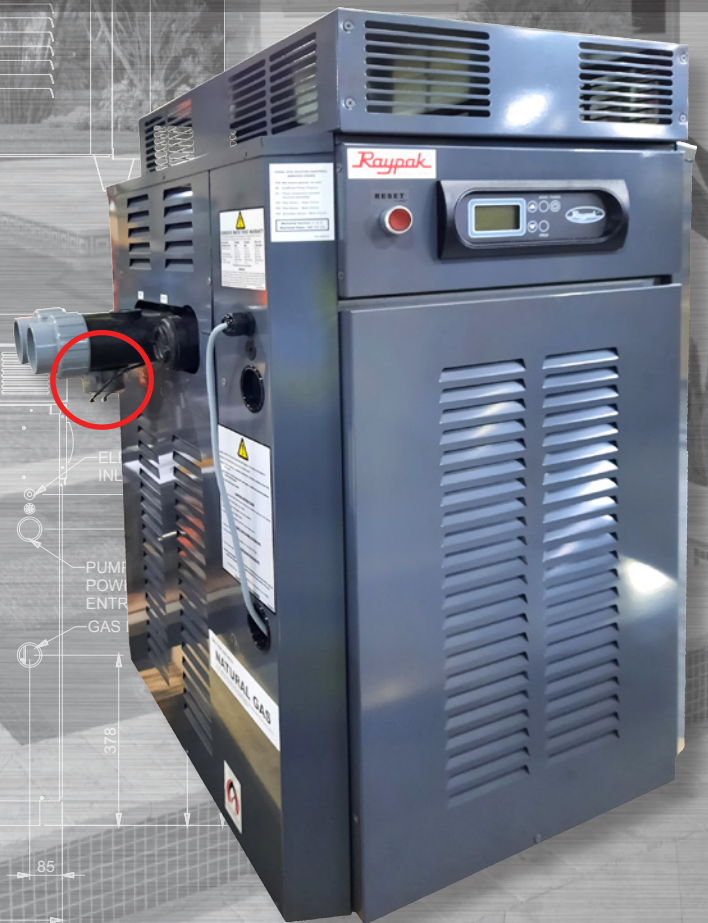
RAYPAK GAS POOL AND SPA HEATING



Trusted Design and Construction
Reliable and Robust
**NOW FEATURING
PROTEK SHIELD™**



Polymer header with
ProTek Shield
(Residential models only)



RHEEM THERMAL SYSTEMS GROUP

INSTALL A



rheemthermal.com.au

RAYPAK PREMIUM & RESIDENTIAL GAS HEATERS

The Raypak Gas Pool and Spa Heater has been Australia's choice for backyard and commercial pool heating for over 35 years and remains manufactured in Australia. It is the pool builders and service technicians' choice because of its long-standing reputation as a reliable heater that is designed to be non complicated, easy to install and simply works perfectly, everytime.

The heater design ensures that your pool is kept at the perfect temperature for your enjoyment. Built to withstand various weather conditions, the heater is the ideal solution for environments requiring efficiency, convenience and versatility, with the atmospheric design ensuring quietness of operation. The heater has a cupro-nickel heat exchanger that now comes with the added protection of ProTek Shield. It has a digital thermostat and control which is easy to operate. It is suitable for outdoor and indoor installation, compatible with most automation pool and spa control systems and is constructed from a heavy duty powder coated all metal case. All you need to do is sit back relax and enjoy your heated pool or spa year round.



Spartan 131



Residential 200*



Residential 280*



Premium 280



Residential 430*



Premium 430

Pool Heater Models 200, 280, 350 & 430

Rheem's range of locally manufactured Raypak pool & spa gas heaters are built for the toughest of operating conditions. The Raypak is clearly the service industry's first choice when it comes to reliability and dependability. A broad range of heater capacity is available to suit all residential and small to medium commercial installations.

The Raypak design includes an array of standard features:

- ProTek Shield module protects the cupro-nickel heat exchanger (Residential models only)
- Reliable & trustworthy performance
- Cupro-nickel heat exchanger for greater protection
- Powder coated heavy gauge metal casing
- Connectivity with automatic pool control systems
- Optional in-house remote control
- Suitable for either indoor or outdoor installations
- Service code diagnostics
- Child-lock function

For those pool owners requiring a higher grade specification including commercial application, the Premium Series features:

- All bronze headers for greater temperature tolerance and corrosion resistance
- Stainless steel base and combustion support

Spa Heater Models 131

The Raypak 131 Model is capable of heating almost any spa on demand. The Spartan 131 is a purpose built budget spa heater for home use.

This model provides an extensive list of features including:

- Digital thermostat display
- Connectivity with automatic spa control systems
- Optional in-house remote control
- Service code diagnostics
- Child-lock function
- Protek not available
- Available in natural gas only
- **Spartan 131 suitable for outdoor installations only**

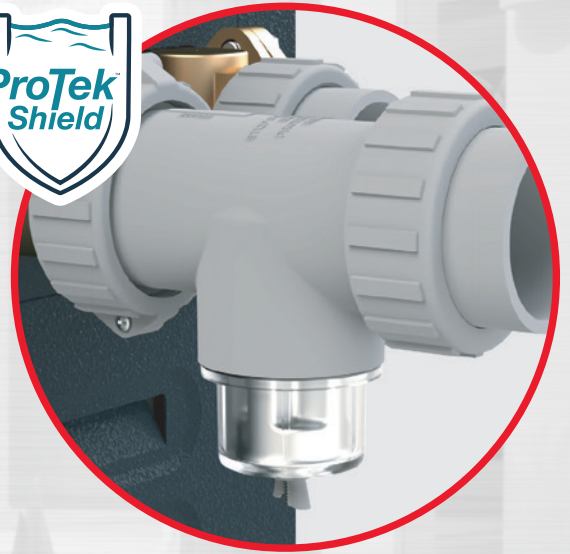
* ProTek included as standard on 200, 280, 350 & 430 Residential Models

PROTEK SHIELD

SOAK IT ALL IN, YOU DESERVE THIS.

ProTek Shield is a cutting-edge module that protects the cupro-nickel heat exchanger and extends the life of your Raypak Gas Pool and Spa Heater. Rest, soak or swim knowing that your pool heater investment can be enjoyed even longer thanks to this innovative, patent-pending technology.

- Excellent for use in chlorinated and salt water pools
- Engineered to take the brunt of the corrosion that naturally occurs over time (erosion of the ProTek Shield means it's working!)
- Utilises breakthrough patent pending technology
- Compact design
- Easy to replace, saving you time and money
- Now included on residential models 200, 280, 350 & 430



Raypak Accessories

Digital Controller



Equipped with a smart control system, our heater features a microprocessor-controlled thermostat.

Easy to use push button controls make adjustment of temperature simple and allows for setting the perfect temperature for your pool or spa.

The control is also equipped with a 7-day programmable time clock, child-lock function and service code diagnostics.

Optional In-house Remote Control



The remote controller can be either surface or flush mounted indoors.

By installing the remote control inside your house, you do not have to go outside to operate your heater or check the water temperature.

The remote controller is available with 10m, 20m or 50m cable lengths.

Flow Switch Kits



A Raypak flow switch is required when the location of the heater is either 1.0-meter higher or lower than the pool or spa water surface. The pressure switch supplied with the heater may not operate correctly under these conditions. The flow switch is also an ideal secondary safety system that can be installed to protect your heater.

High Wind Top Kits



In some areas where high winds are frequently experienced it may be necessary to install a Raypak High Wind Top. Installation of the High Wind Top will assist proper draw through the heater and improve operation. High wind tops are available for all models except the Spartan 131.

Indoor Hood Kits



All Raypak pool and spa heaters are built standard for outdoor installation. If the installation location however is indoor, such as in a plant room, an indoor flue kit is available as an option to convert the standard outdoor model to be suitable for indoor operation. Heaters installed indoors must never operate in the standard outdoor configuration.

External Switch*

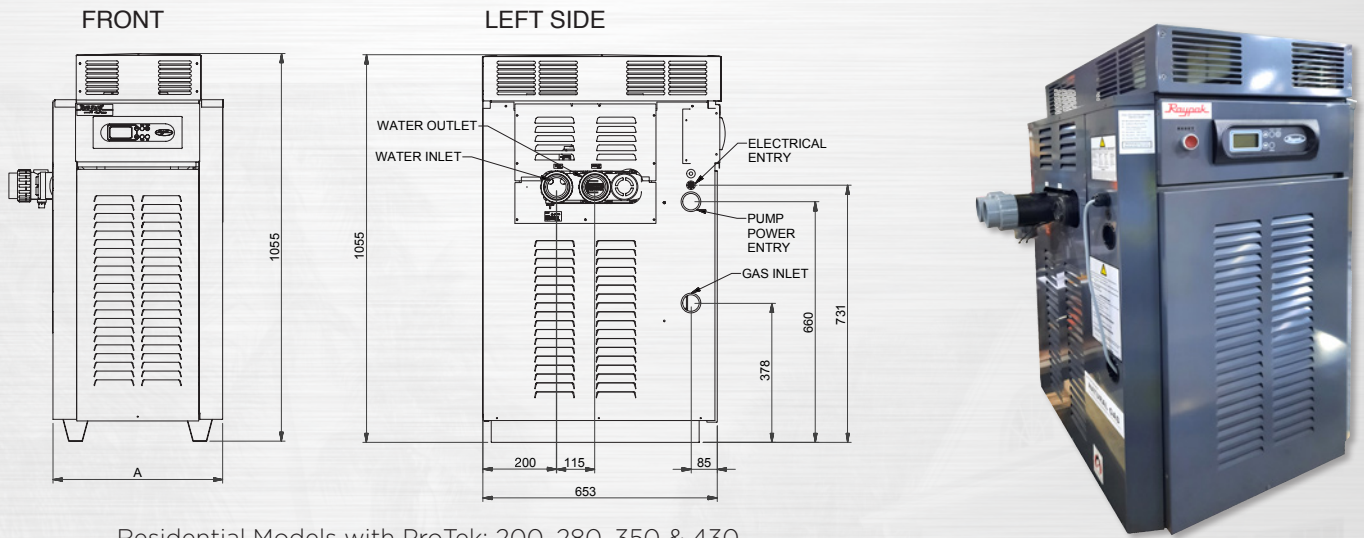


For easy connectivity and control from most third-party automatic and wifi pool control systems.

*Residential Models: 200, 280, 350 & 430

*Premium Models: 280 & 430

TECHNICAL DATA



Residential Models with ProTek: 200, 280, 350 & 430

Selecting the right size gas heater for your pool or spa heating requirements

Premium and Residential Gas Heaters												
Model	Nominal Rating				Approximate Dimensions				Connections		Indoor Installations	
	Natural Gas		Propane Gas		All Models				Gas	Water		
	Input MJ/h	Output kW	Input MJ/h	Output kW	Height mm	A Width mm	Depth mm	Weight kgs	mm	mm	Flue Diameter mm	Height Overall mm
131 Spartan Residential	120	24	NA	NA	860	440	650	35	20	40	NA	NA
200 Residential	196	44	185	41	1055	530	653	70	20	50	175	1550
280 Premium & Residential	278	62	261	58	1055	640	653	75	20	50	200	1550
350 Residential	343	76	323	72	1055	730	653	85	20	50	225	1605
430 Premium & Residential	420	94	369	88	1055	870	653	90	20	50	250	1605

Temperature Rise										
Model	Temperature Rise per Hour (Spa)				Temperature Rise over 24 hours (Pool)					
	Spa Volume (Litres)				Pool Surface Area (m2)					
	2000	3000	4000	5000	20	40	60	80	100	
131 Spartan Residential	10°	6°	5°	4°						
200 Residential	17°	12°	9°	7°	21°	15°	10°	8°	6°	
280 Premium & Residential	25°	17°	12°	10°	26°	20°	14°	10°	8°	
350 Residential	32°	21°	16°	12°	32°	25°	18°	13°	10°	
430 Premium & Residential	38°	26°	19°	15°	34°	27°	20°	15°	12°	

Note: Temperature rise is provided as a guide only and is based on outdoor installations and an average wind speed of 2.2km/h and depth of 1.3m. Temperature rise will be greater with indoor installations or lower with higher wind speeds.

Rheem Warranty*	Parts	Labour
Premium Pool & Spa Heaters installed for use in commercial applications.	3 Years	1 Year
Residential Pool & Spa Heaters installed for use in a single-family dwelling.	3 Years	1 Year
Residential Pool & Spa Heaters installed for use in a commercial installation.	6 Months	6 Months

* Excludes Protek Shield replacement anode. Please contact 1300 132 950 for full details about Rheem's warranty terms & conditions

The Australian Consumer Law

Our goods come with guarantees that cannot be excluded under the Australian consumer law. You are entitled to a replacement or refund for a major failure and compensation for any other reasonably foreseeable loss or damage. You are also entitled to have the goods repaired or replaced if the goods fail to be of acceptable quality and the failure does not amount to a major failure. Rheem's warranty is in addition to any rights and remedies that you may have under the Australian consumer law.

Rheem Thermal is continually seeking to improve the performance of its heating product. Product specification information provided above is correct at the date of publication, this data may change without notice. Product data should be verified at the time of order.

RHEEM THERMAL SYSTEMS GROUP

INSTALL A



Call us today for technical sales advice and the location of your nearest distributor, or visit www.rheemthermal.com.au

Rheem Pool Heating Advisory 1300 132 950

email: info@rheemthermal.com.au